



Vehicle Concept Characteristics - LV 41.5003.10051

UPPER STAGE

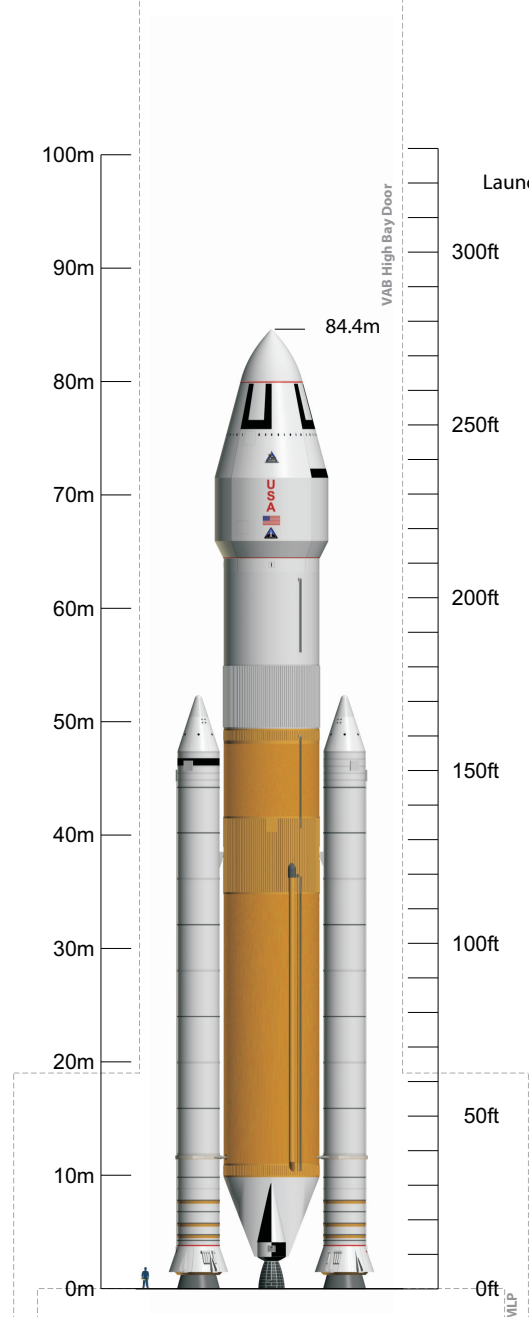
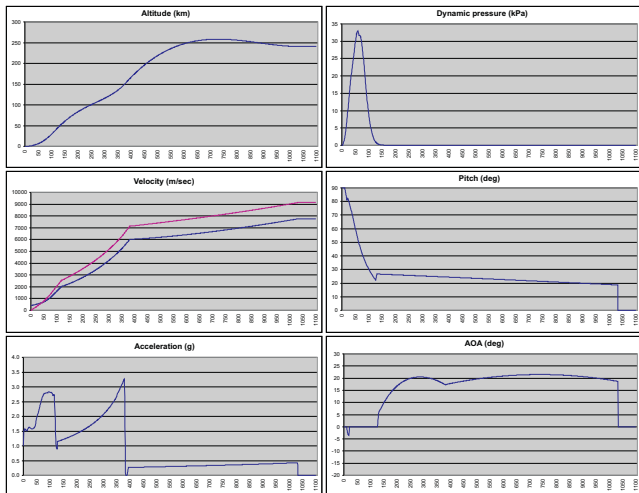
Design Heritage	Boeing ACES / Lockheed-Martin WBC
Propellants	LOX / LH2
Maximum Gross Propellant	412,601lb (187,152kg)
Usable Ascent Propellant	150,522lb (68,276kg)
Ascent Flight Performance Reserve	6,977lb (3,165kg)
Usable Post-Ascent Propellant	-
Post-Ascent Flight Performance Reserve	-
Unusable Residuals	4,006lb (1,817kg)
Ascent In-Flight Losses	239lb (109kg)
RCS Propellant	992lb (450kg)
Propellant Offload	60.19%
Stage pmf	0.9357
Dry Mass	24,068lb (10,917kg)
Burnout Mass	28,074lb (12,734kg)
# Engines / Type	6 / RL-10A-4-2
Engine Thrust (@ 100%) Vac	22,300lbf (10,115kgf / 99,195N)
Engine Isp (@ 100%) Vac	445.2s
Mission Power Level	100.0%
Upper Stage Ascent Burn Time	644.9s
LEO Loiter Period	4 + 1 days
Pre-TLI Overboard Mass	-
ASE*	1,102lb (500kg)

DYNAMICS

Thrust : Weight @ Liftoff	1.520 : 1
Max Dynamic Pressure	688.2psf (32,949Pa)
Max g's During Ascent	3.28g
Insertion Altitude	130.0nmi (240.8km)

ASCENT PERFORMANCE

Delivery Orbit	130.0 x 130.0nmi, 29.0°
Payload w/ regular NASA GR&A's	249,729lb (113,275kg) †
Payload w/ additional 10% Reserve	224,756lb (101,948kg) †



Launch Site KSC LC-39 (Latitude: 28.6084°)

GLOW	5,721,090lb (2,595,043kg)
Payload Fairing	32.8 x 18.4ft (10.0 x 5.6m)
Payload Envelope	30.2 x 18.4ft (9.2 x 5.6m)
Payload Fairing Jettison Mass	15,916lb (7,219kg)
Payload Fairing Jettison	351.6s @ 73.5nmi
Launch Abort System Jettison Mass	-
Launch Abort System Jettison	-

BOOSTERS (each)	
Design Heritage	Shuttle RSRM - Flown Unchanged
Propellants	PBAN
Usable Propellant	1,380,873lb (626,353kg)
Stage pmf	0.8656
Dry Mass	228,620lb (103,700kg)
Burnout Mass	232,608lb (105,509kg)
# Boosters / Type	2 / 4-segment Shuttle RSRM
Booster Thrust (@ 0.7s) SL	3,510,791lbf (1,592,468kgf / 15,616,776N)
Vac	3,510,791lbf (1,592,468kgf / 15,616,776N)
Booster Isp (@ 0.7s) SL	237.0s
Vac	267.4s
Booster Burn Time	126.6s

CORE STAGE	
Design Heritage	Shuttle Super Light Weight Tank ET
Propellants	LOX / LH2
Gross Propellant	1,621,191lb (735,360kg)
Usable Ascent Propellant	1,604,979lb (728,006kg)
Unusable Residuals	16,047lb (7,279kg)
In-Flight Losses	325lb (147kg)
Propellant Offload	0.00%
Stage pmf	0.9075
Dry Mass	147,479lb (66,895kg)
Burnout Mass	163,526lb (74,174kg)
# Engines / Type	4 / SSME-Block-II
Engine Thrust (@ 104.5%) SL	392,326lbf (177,956kgf / 1,745,155N)
Vac	490,847lbf (222,644kgf / 2,183,396N)
Engine Isp (@ 104.5%) SL	361.4s
Vac	452.2s
Mission Power Level	104.5%
Core Burn Time	384.1s

INTERSTAGE	
Dry Mass	8,748lb (3,968kg)

* ASE is part of the Payload, not additional

† Ascent Performance for Jupiter-246 protects for Upper Stage Single-Engine-Out and full FPR